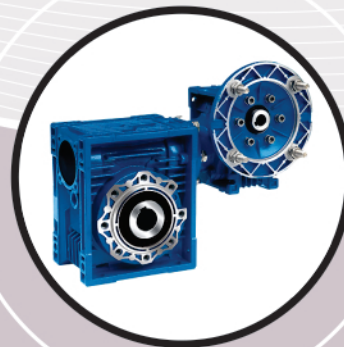
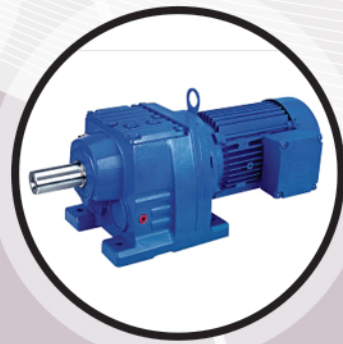
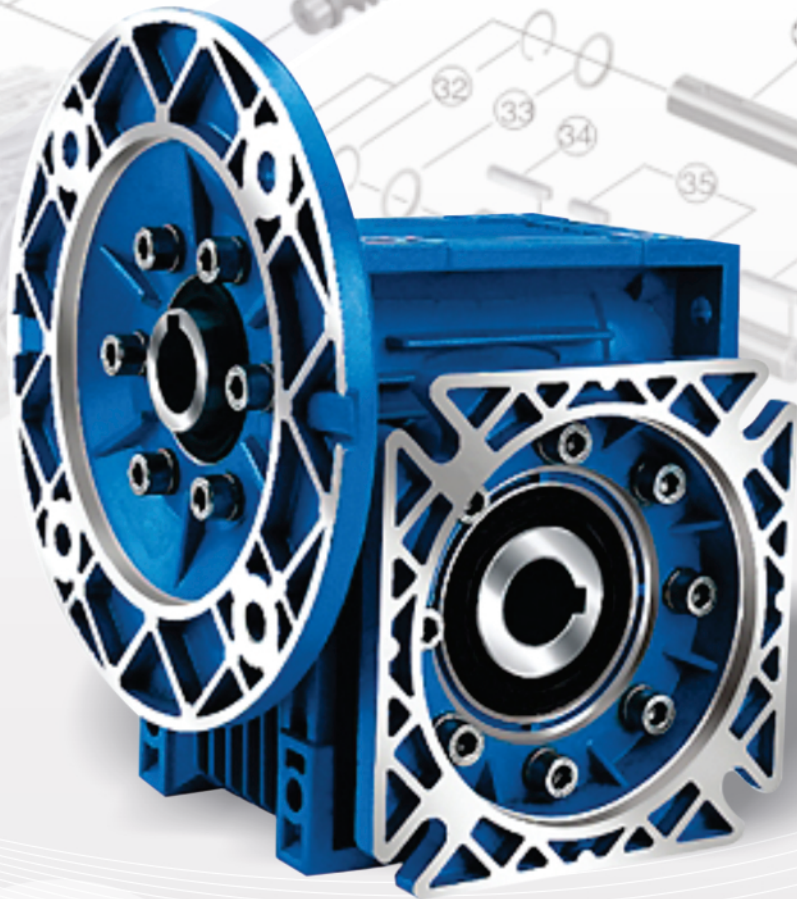


MARK OF QUALITY  
**Abron**<sup>®</sup>

Superior Range of

**WORM & HELICAL  
GEARBOXES**



[www.variationelectric.in](http://www.variationelectric.in)

(AN ISO 9001 : 2015 Certified Company)

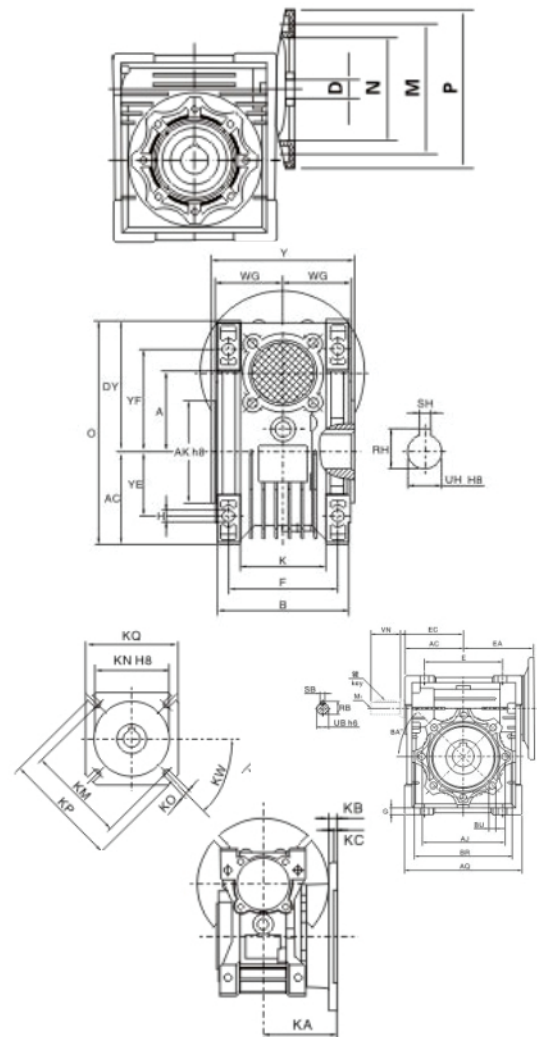
**VARIATION ELECTRIC COMPANY PRIVATE LIMITED**

## DIMENSION OF WORM GEAR BOXES

BOX TYPE	A	ACA	JAKA	AQ	B	BABR	BUDY	E	EA	EC	F	G	H	K	M1	O	R	B	RHS	SB	SHUB	UHV	NW	G	Y	YE	YF	OUTPUT FLANGE FA										W. (Kg.)		
																												KA	KB	KC	KN	KM	KO	KP	KQ	KW				
BOX 025	25	35	55	45	70	42	-	65	-	48	45	45	-	34	5	6	22	-	83	-	12.8	-	4	-	11	-	22.5	50	22	35.5	-	-	-	-	-	-	-	-	0.7	
BOX 030	30	40	65	55	80	56	0°	75	M8x11 n.4	57	54	55	45	44	5.5	6.5	32	-	97	10.2	16.2	3	5	9	14	20	29	63	27	44	54.5	6	4	50	68	6.5 (n°4)	80	70	45°	1.3
BOX 040	40	50	75	60	100	71	45°	87	M8x18 n.4	71.5	70	71	53	60	6.5	7	43	-	121.5	12.5	20.8	4	6	11	18	23	36.5	78	35	55	67	7	4	60	80min	9 (n°4)	110	95	45°	2.3
BOX 050	50	60	85	70	120	85	45°	100	M8x18 n.4	84	80	80	64	70	7	8.5	49	M6	144	16	28.3	5	8	14	25	30	43.5	92	40	64	90	9	5	70	90min	11 (n°4)	125	110	45°	3.5
BOX 063	63	72	95	80	144	103	45°	110	M8x14 n.8	102	100	95	75	85	8	8.5	67	M6	174	21.5	28.3	6	8	19	25	40	53	112	50	80	82	10	6	115	150	11 (n°4)	180	142	45°	6.2
BOX 075	75	86	115	95	172	112	45°	140	M8x14 n.8	119	120	112.5	90	90	10	11	72	M8	205	27	31.3	8	8	24	28	50	57	120	60	93	111	13	6	130	165	14 (n°4)	200	170	45°	9
BOX 090	90	103	130	110	206	130	45°	160	M18x18 n.8	135	140	130	108	100	11	13	74	M8	238	27	38.3	8	10	24	35	50	67	140	70	102	111	13	6	152	175	14 (n°4)	210	200	45°	13
BOX 110	110	127.5	165	130	252	144	45°	200	M18x18 n.8	167.5	170	160	135	115	15	14	-	M10	295	31	45.3	8	12	28	42	60	74	155	85	125	131	15	6	170	230	14 (n°8)	280	260	45°	35
BOX 130	130	147.5	215	180	292	155	45°	250	M12x21 n.8	187.5	200	180	155	120	15	16	-	M10	335	33	48.8	8	14	19	45	80	81	170	100	140	140	15	6	180	255	16 (n°8)	320	290	22.5°	48
BOX 150	150	170	215	180	340	185	45°	250	M12x21 n.8	230	240	210	175	145	18	18	-	M12	400	38	53.8	10	14	33	50	80	96	200	120	180	155	15	6	180	255	16 (n°8)	320	290	22.5°	84

## INPUT AND COMBINATIONS

	Motor flange				"D" The Hole Diameter of input shaft											
	PAM IEC	P	M	N	Transmission Ratio											
					7.5	10	15	20	25	30	40	50	60	80	100	
BOX 025	56B14	80	65	50	9	9	9	9	9	9	9	9	9	9		
	63B5	140	115	95	11	11	11	11	11	11	11	11	11	11	11	
BOX 030	63B14	90	75	60												
	56B5	120	100	80												
BOX 040	56B14	80	65	50	9	9	9	9	9	9	9	9	9	9	9	
	71B5	160	130	110												
	71B14	105	85	70	14	14	14	14	14	14	14	14	14	14	14	
	63B5	140	115	95												
	63B14	90	75	60	11	11	11	11	11	11	11	11	11	11	11	11
	56B5	120	100	80								9	9	9	9	9
BOX 050	80B5	200	165	130												
	80B14	120	100	80	19	19	19	19	19	19						
	71B5	160	130	110												
	71B14	105	85	70	14	14	14	14	14	14	14	14	14	14	14	14
BOX 063	63B5	140	115	95								11	11	11	11	11
	90B5	200	165	130												
	90B14	140	115	95	24	24	24	24	24	24	14					
	80B5	200	165	130												
	80B14	120	100	80	19	19	19	19	19	19	19	19	19	19	19	19
	71B5	160	130	110												
BOX 075	71B14	105	85	70								14	14	14	14	14
	100/112B5	250	215	180	28	28	28									
	110/112B14	160	130	110												
	90B5	200	165	130												
	90B14	140	115	95	24	24	24	24	24	24	24					
	80B5	200	165	130												
BOX 090	80B14	120	100	80				19	19	19	19	19	19	19	19	19
	71B5	160	130	110								14	14	14	14	14
	100/112B5	250	215	180	28	28	28	28	28	24						
	110/112B14	160	130	110												
	90B5	200	165	130												
	90B14	140	115	95	24	24	24	24	24	24	24	24	24	24	24	24
BOX 110	80B5	200	165	130												
	80B14	120	100	80							19	19	19	19	19	19
	132B5	300	265	230	38	38	38	38								
	110/112B5	250	215	180	28	28	28	28	28	28	28	28	28	28	28	28
BOX 130	90B5	200	165	130					24	24	24	24	24	24	24	24
	80B5	200	165	130											19	19
	132B5	300	265	230	38	38	38	38	38	38	38					
BOX 150	100/112B5	250	215	180					28	28	28	28	28	28	28	28
	90B5	200	165	130											24	24
	160B5	350	320	250	42	42	42	42	42							
BOX 150	132B5	300	265	230				14	14	14	14		14	14		
	100/112B5	250	215	180								14	14	14	14	14



\*If you want special key, please call our technical Service  
(Design being continuous improved please re-confirm  
specification & dimensions prior to ordering)

**VARIATION ELECTRIC COMPANY PRIVATE LIMITED**

**Works :** Plot No-31, Karkhana Bagh, 16/2 Mathura Road, Faridabad-121002 (Haryana) INDIA

**Sales :** A-16/E, Nehru Ground, N. I. T. Faridabad-121001 (Haryana) INDIA

**Tel : + 91 129 2268120, 4018120 | Mob : +91- 9313808570, 9311808570, 9811082255**

**E-mail :** [variationelectric@yahoo.com](mailto:variationelectric@yahoo.com) | **Website :** [www.variationelectric.in](http://www.variationelectric.in)

**Authorised Dealer**